

Change Notice

Change to Material of JF Series Movable Contact

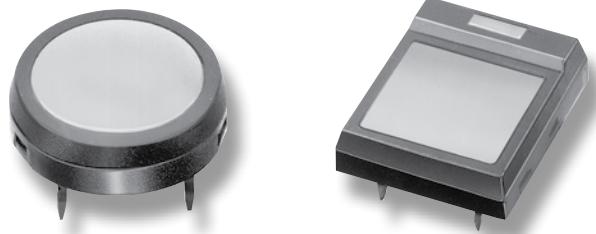
Type of Change:

- Engineering Part Number
 Product Appearance

JF Series tactile switches will have a change to the material of the movable contact. This change will affect the rectangular body illuminated switches, and the round or square body non-illuminated switches with any shape of actuator. The spring material has been improved from phosphor bronze to stainless steel.

JF Series Movable Contact Material

- All Illuminated Models
- All Non-illuminated Models
- Standard & Custom Models



Movable Contact Material	
Before Change	After Change
Phosphor Bronze Spring	Stainless Steel Spring

Availability

Change to material of the JF Series movable contact is effective with January 2010 production.