

General Specifications

Electrical Capacity (Resistive Load)

Power Level (silver):	3A @ 125V AC
Logic Level (gold):	0.4VA maximum @ 28V AC/DC maximum (Applicable Range 0.1mA ~ 0.1A @ 20mV ~ 28V)
Logic/Power Level: (gold over silver)	Combines silver & gold ratings
	Note: Find additional explanation of dual rating & operating range in Supplement section.

Other Ratings

Contact Resistance:	20 milliohms maximum for silver; 30 milliohms maximum for gold
Insulation Resistance:	1,000 megohms minimum @ 500V DC
Dielectric Strength:	1,000V AC minimum between contacts for 1 minute minimum; 1,500V AC minimum between contacts & case for 1 minute minimum
Mechanical Life:	200,000 operations minimum
Electrical Life:	25,000 operations minimum for silver; 100,000 operations minimum for gold
Nominal Operating Force:	Single pole 2.45N; double pole 3.92N
Travel	Pretravel .024" (0.6mm); Overtravel .016" (0.4mm); Total Travel .039" (1.0mm)

Materials & Finishes

Plunger:	Brass with nickel plating
Bushing:	Brass with nickel plating
Frame:	Stainless steel
Case:	Polybutylene terephthalate (PBT) (UL94V-0)
Base:	Diallyl phthalate resin (UL94V-0)
Movable Contactor:	Phosphor bronze with silver or gold plating
Movable Contacts:	Silver alloy (code W); copper with gold plating (code G); or silver alloy with gold plating (code A)
Stationary Contacts:	Silver alloy with silver plating (code W); copper or brass with gold plating (code G); or silver with gold plating (code A)
Terminals:	Copper or brass with silver plating; copper or brass with gold plating

Environmental Data

Operating Temp Range:	-30°C through +85°C (-22°F through +185°F)
Humidity:	90 ~ 95% humidity for 96 hours @ 40°C (104°F)
Vibration:	10 ~ 55Hz with peak-to-peak amplitude of 1.5mm traversing the frequency range & returning in 1 minute; 3 right angled directions for 2 hours
Shock:	50G (490m/s ²) acceleration (tested in 6 right angled directions, with 3 shocks in each direction)

Installation

Mounting Torque:	1.5Nm (13.0 lb•in) for double nut; 0.7Nm (6.0 lb•in) for single nut
Cap Installation Force:	80.0N (18.0 lbf) maximum downward force on actuator
Soldering:	Wave Soldering (PC version): See Profile B in Supplement section. Manual Soldering: See Profile B in Supplement section.
Cleaning:	These devices are not process sealed. Hand clean locally using alcohol based solution. See Cleaning Specifications in Supplement section.

Standards & Certifications

Flammability Standards:	UL94V-0 case & base
UL:	File No. E44145 - Recognized only when ordered with marking on switch. Add "/U" or "/CUL" before dash in part number to order UL recognized switch. All single and double pole models recognized at 3A @ 125V AC or 0.4VA max. @ 28V DC max.
CSA:	File No. 023535_0_000 - Certified only when ordered with marking on switch. Add "/C" before dash in part number to order CSA certified switch. Single pole models with PC, solder lug, or Wirewrap terminals & double pole with PC or Wirewrap terminals certified at 3A @ 125V AC or 0.4VA @ 28V maximum.

Distinctive Characteristics

Snap-acting mechanism gives smooth actuation, short stroke, light touch, and audible feedback. This mechanism also provides long mechanical life.

High torque bushing construction prevents rotation or separation from frame during installation.

Antijamming design protects contacts from damage due to excessive downward force on the actuator.

Compatible companions with M series toggles. Body, bushing, and footprint dimensions ideal for mounting MB2400 pushbuttons and M toggles next to one another.

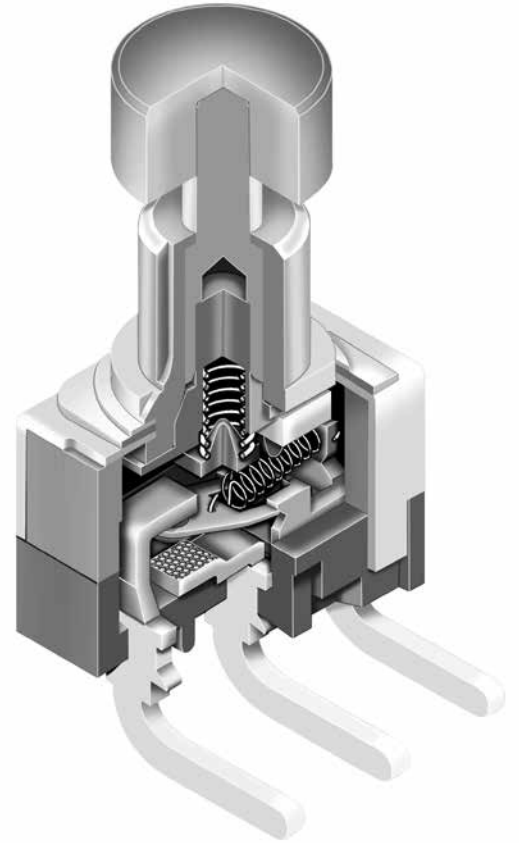
Stainless steel frame resists corrosion.

Longer center solder lug terminal simplifies wiring and soldering.

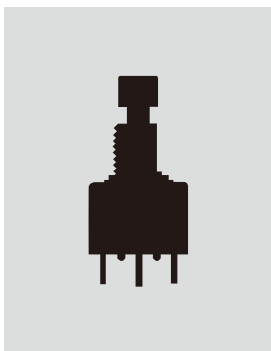
Silver contacts of specially composed alloy for hardness.


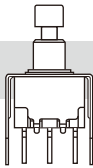
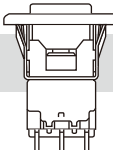
Epoxy sealed terminals prevent entry of solder flux and other contaminants.

Prominent external insulating barriers increase insulation resistance and dielectric strength.

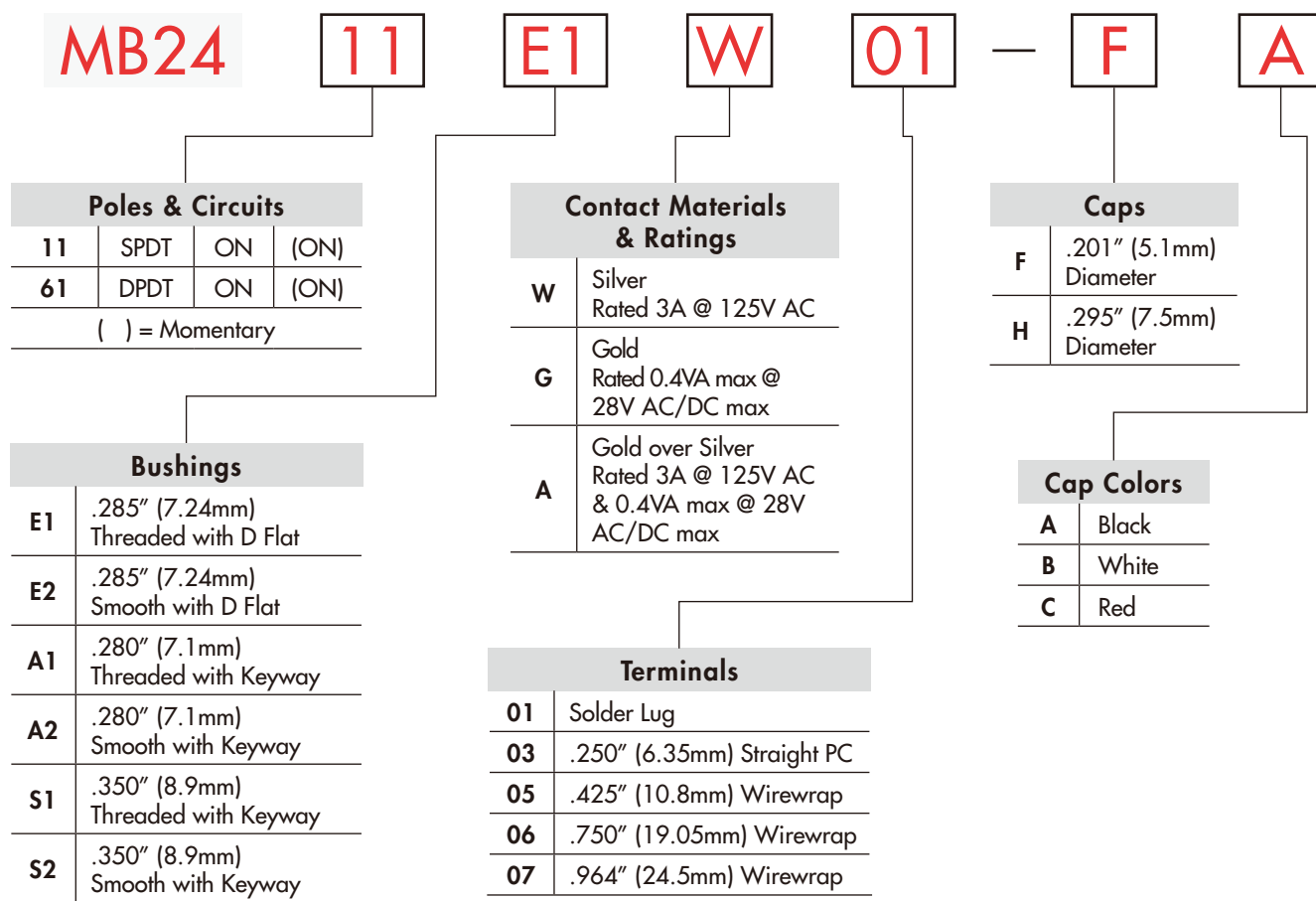


Actual Size



	Bushing Mount	Page C102
	Bracket PC Mount	Page C106
	Snap-in Mount	Page C112

TYPICAL SWITCH ORDERING EXAMPLE



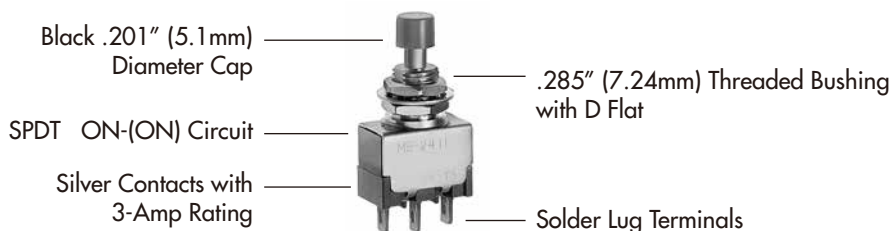
IMPORTANT:



Switches are supplied without UL, cULus & CSA marking unless specified.
UL, cULus & CSA recognized only when ordered with marking on the switch.
 Specific models, ratings, & ordering instructions are noted on the General Specifications page.











DESCRIPTION FOR TYPICAL ORDERING EXAMPLE

MB2411E1W01-FA



Toggles
Rockers
Pushbuttons
Illuminated PB
Programmable
Keylocks
Rotaries
Slides
Tactiles
Tilt
Touch
Indicators
Accessories
Supplement

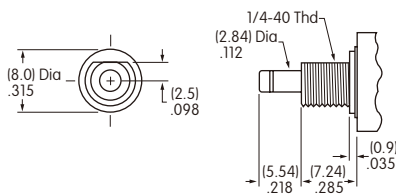
POLES & CIRCUITS

Pole	Model	Plunger Position () = Momentary		Connected Terminals		Throw & Switch Schematics
		Normal	Down	Normal	Down	
SP	MB2411	ON 	(ON) 	1-3 	1-2 	Note: Terminal numbers are not actually on the switch. SPDT 
DP	MB2461	ON 	(ON) 	1-3 4-6 	1-2 4-5 	DPDT 

BUSHINGS

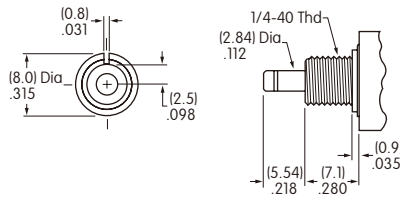
Note: Plunger selection is not required for MB2400 pushbuttons. The plunger can be used with or without a cap.

E1 .285" (7.24mm)
Threaded with D Flat



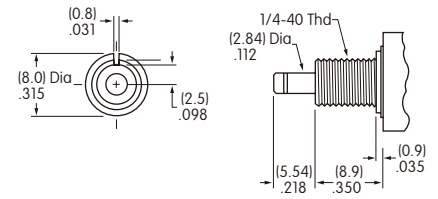
Maximum Panel Thickness with Standard Hardware: .068" (1.74mm)

A1 .280" (7.1mm)
Threaded with Keyway



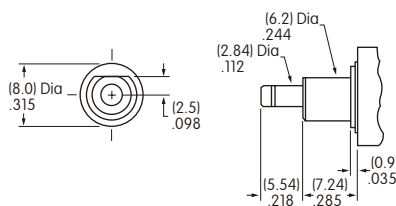
Maximum Panel Thickness with Standard Hardware: .068" (1.74mm)

S1 .350" (8.9mm)
Threaded with Keyway

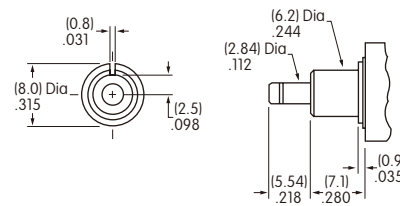


Maximum Panel Thickness with Standard Hardware: .134" (3.40mm)

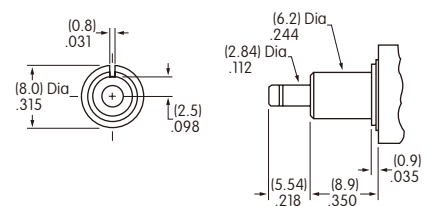
E2 .285" (7.24mm)
Smooth with D Flat



A2 .280" (7.1mm)
Smooth with Keyway

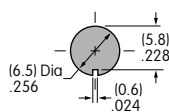


S2 .350" (8.9mm)
Smooth with Keyway

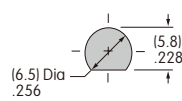


Panel Cutouts

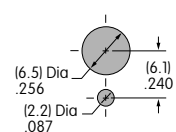
For A1, A2, S1, or S2 Bushing with Keyway



For E1 or E2 Bushing with D Flat



With Optional Locking Ring



Standard hardware includes 2 hex nuts & 1 lockwasher.
Hardware is illustrated following the Typical Switch Dimension drawings.

CONTACT MATERIALS & RATINGS

W

Silver over Silver

Power Level

3A @ 125V AC

G

Gold over Brass or Copper

Logic Level

0.4VA maximum @ 28V AC/DC maximum

Note: Complete explanation of operating range in Supplement section.

A

Gold over Silver

Power Level
or Logic Level

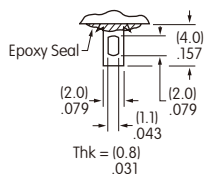
3A @ 125V AC
or 0.4VA maximum @ 28V AC/DC maximum

Note: This dual rated option is suitable when two or more identical switches are used in logic and in power circuits within the same application. See Supplement section for complete explanation of dual rating and operating range.

TERMINALS

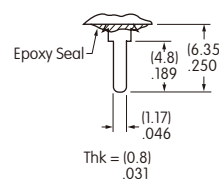
01

Solder Lug



03

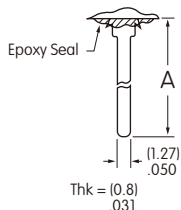
.250" (6.35mm)
Straight PC



Wirewrap or Extended PC

05

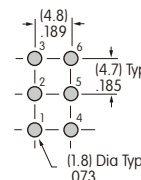
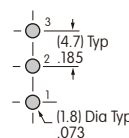
.425"
(10.8mm)



06

.750"
(19.05mm)

Refer to footprints if using
as extended PC terminal.



Dimension A = terminal
lengths as shown beside
the code boxes at left.

Single Pole

Double Pole

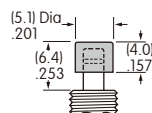
07

.964"
(24.5mm)

CAPS & CAP COLORS

F

AT475
.201" (5.1mm)
Diameter Cap



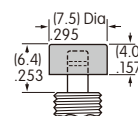
Material: Polyamide

Finish: Glossy



H

AT496
.295" (7.5mm)
Diameter Cap



Material: Polyamide

Finish: Glossy



Cap Colors
Available:

A

Black

B

White

C

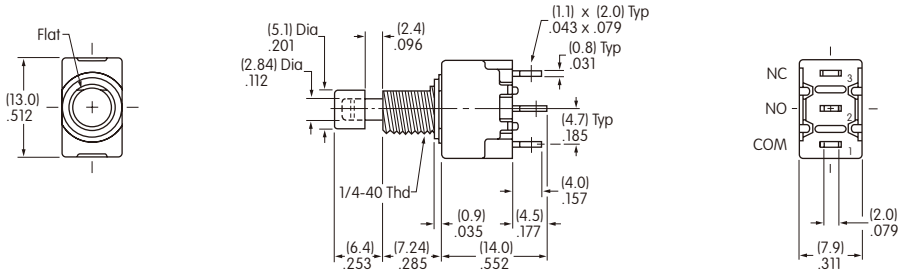
Red

Toggles
Rockers
Pushbuttons
Illuminated PB
Programmable
Keylocks
Rotaries
Slides
Tactiles
Tilt
Touch
Indicators
Accessories
Supplement

TYPICAL SWITCH DIMENSIONS

Single Pole

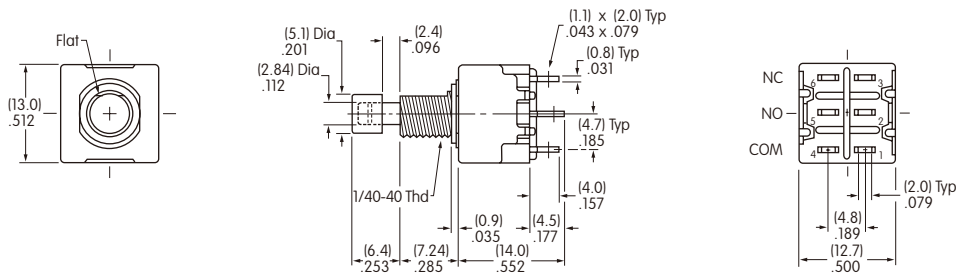
Solder Lug



MB2411E1W01-FA

Double Pole

Solder Lug



MB2461E1W01-FA

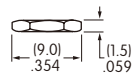
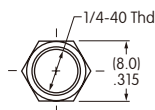
HARDWARE

Standard Hardware

AT513H Inch Threaded Hexagon Nut

2 included with each switch

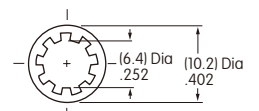
Material:
Brass with Nickel Plating



AT509 Lockwasher

1 included with each switch

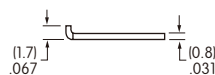
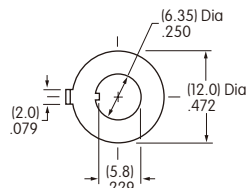
Material:
Steel with Zinc/Chromate



Optional Hardware

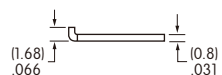
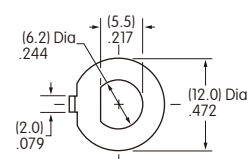
AT507H Locking Ring for A1 or S1 Bushing

Material:
Steel with Zinc/Chromate



AT515 Locking Ring for E1 Bushing

Material:
Steel with Zinc/Chromate



TYPICAL SWITCH ORDERING EXAMPLE

MB24

11

A2

G

40

F

A

Poles & Circuits

11	SPDT	ON	(ON)
61	DPDT	ON	(ON)

() = Momentary

Bushings

A2	.280" (7.1mm) Smooth with Keyway
A1	.280" (7.1mm) Threaded with Keyway
E2	.285" (7.24mm) Smooth with D Flat
E1	.285" (7.24mm) Threaded with D Flat
S2	.350" (8.9mm) Smooth with Keyway
S1	.350" (8.9mm) Threaded with Keyway

Contact Materials & Ratings

W	Silver Rated 3A @ 125V AC
G	Gold Rated 0.4VA max @ 28V AC/DC max
A	Gold over Silver Rated 3A @ 125V AC & 0.4VA max @ 28V AC/DC max

Caps

F	.201" (5.1mm) Dia.
H	.295" (7.5mm) Dia.

Cap Colors

A	Black
B	White
C	Red

Terminals

With Bracket

13	.250" (6.35mm) Straight PC with .465" (11.8mm) Bracket
15	.425" (10.8mm) Straight PC with .630" (16.0mm) Bracket
17	.964" (24.5mm) Straight PC with 1.150" (29.2mm) Bracket

With Reinforced Bracket

23	.250" (6.35mm) Straight PC with .465" (11.8mm) Bracket
25	.425" (10.8mm) Straight PC with .630" (16.0mm) Bracket
26	.750" (19.05mm) Straight PC with .953" (24.2mm) Bracket

With Terminal Support

30	Right Angle PC
40	Vertical PC

IMPORTANT:



Switches are supplied without UL, cULus & CSA marking unless specified.
UL, cULus & CSA recognized only when ordered with marking on the switch.
 Specific models, ratings, & ordering instructions are noted on the General Specifications page.

DESCRIPTION FOR TYPICAL ORDERING EXAMPLE

MB2411A2G40-FA

.280" (7.1mm) Smooth Bushing
with Keyway
Black .201" (5.1mm)
Diameter Cap



SPDT
ON-(ON) Circuit
Vertical PC Terminals
Gold Contacts with
0.4VA Rating

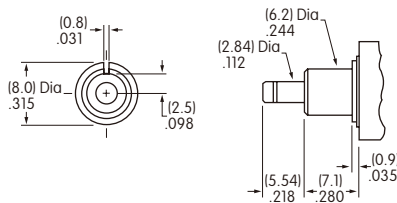
POLES & CIRCUITS

Pole	Model	Plunger Position () = Momentary		Connected Terminals		Throw & Switch Schematics
		Normal	Down	Normal	Down	
						Note: Terminal numbers are not actually on the switch.
SP	MB2411	ON	(ON)	1-3	1-2	SPDT
DP	MB2461	ON	(ON)	1-3 4-6	1-2 4-5	DPDT

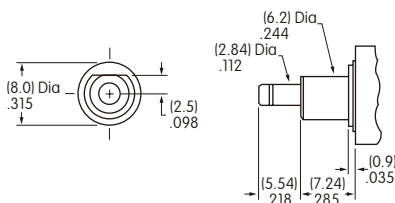
BUSHINGS

Note: Plunger selection is not required for MB2400 pushbuttons. The plunger can be used with or without a cap.

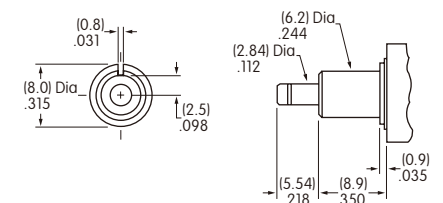
A2 .280" (7.1mm)
Smooth with Keyway



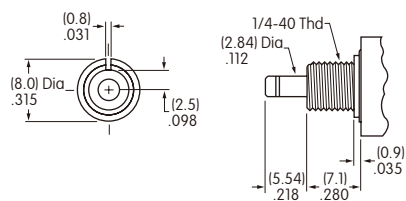
E2 .285" (7.24mm)
Smooth with D Flat



S2 .350" (8.9mm)
Smooth with Keyway

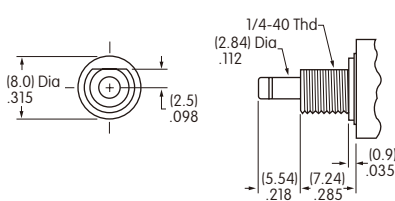


A1 .280" (7.1mm)
Threaded with Keyway



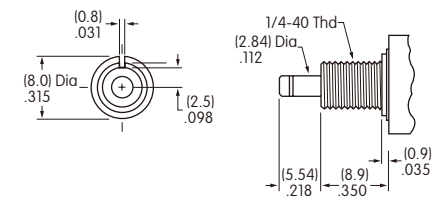
Maximum Panel Thickness with Standard Hardware: .068" (1.74mm)

E1 .285" (7.24mm)
Threaded with D Flat



Maximum Panel Thickness with Standard Hardware: .068" (1.74mm)

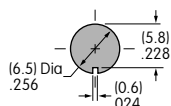
S1 .350" (8.9mm)
Threaded with Keyway



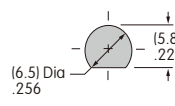
Maximum Panel Thickness with Standard Hardware: .134" (3.40mm)

Panel Cutouts

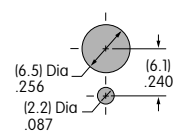
For A1, A2, S1, or S2 Bushing with Keyway



For E1 or E2 Bushing with D Flat



With Optional Locking Ring



Standard hardware includes 2 hex nuts & 1 lockwasher. Hardware is illustrated following the Typical Switch Dimension drawings.

CONTACT MATERIALS & RATINGS

W

Silver over Silver

Power Level

3A @ 125V AC

G

Gold over Brass or Copper

Logic Level

0.4VA maximum @ 28V AC/DC maximum

Note: Complete explanation of operating range in Supplement section.

A

Gold over Silver

Power Level
or Logic Level

3A @ 125V AC
or 0.4VA maximum @ 28V AC/DC maximum

Note: This dual rated option is suitable when two or more identical switches are used in logic and in power circuits within the same application. See Supplement section for complete explanation of dual rating and operating range.

TERMINALS

Straight PC Mount with Bracket

13

.250" (6.35mm)
Terminal with
.465" (11.8mm)
Bracket

15

.425" (10.8mm)
Terminal with
.630" (16.0mm)
Bracket

17

.964" (24.5mm)
Terminal with
1.150" (29.2mm)
Bracket

23

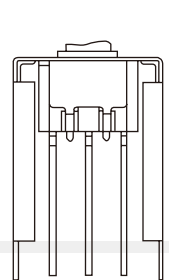
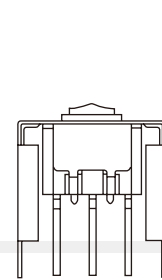
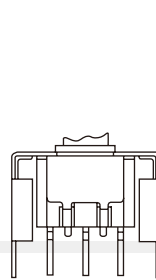
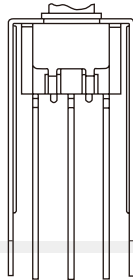
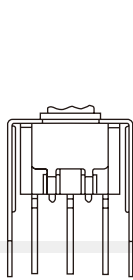
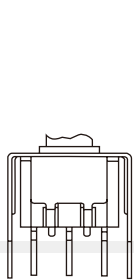
.250" (6.35mm)
Terminal with
.465" (11.8mm)
Bracket

25

.425" (10.8mm)
Terminal with
.630" (16.0mm)
Bracket

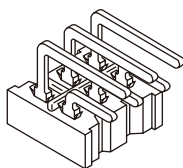
26

.750" (19.05mm)
Terminal with
.953" (24.2mm)
Bracket



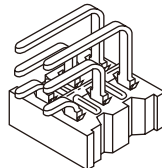
30

Right Angle PC



40

Vertical PC



PCB footprints are on the following
Typical Switch Dimension pages.

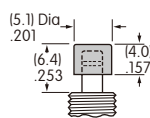
CAPS & CAP COLORS

F

AT475
.201" (5.1mm)
Diameter Cap

Material: Polyamide

Finish: Glossy

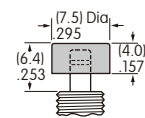


H

AT496
.295" (7.5mm)
Diameter Cap

Material: Polyamide

Finish: Glossy



Cap Colors
Available:

A

Black

B

White

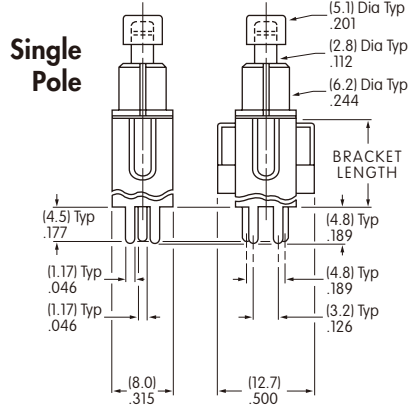
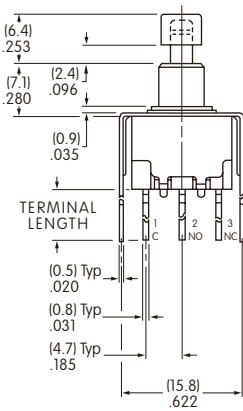
C

Red

Toggles
Rockers
Pushbuttons
Illuminated PB
Programmable
Keylocks
Rotaries
Slides
Tactiles
Tilt
Touch
Indicators
Accessories
Supplement

TYPICAL SWITCH DIMENSIONS

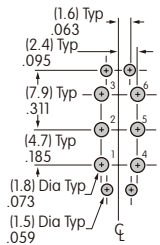
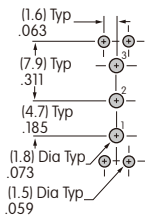
Straight PC • Bracket



Double Pole

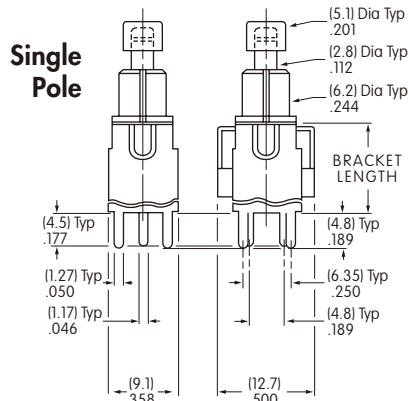
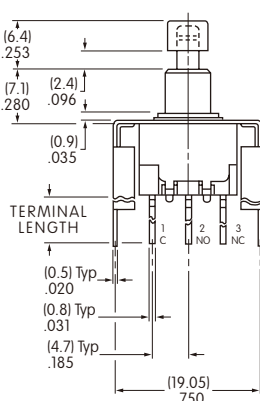


MB2411A2G13-FA



Terminal Code:	Terminal Length:	Bracket Length:
13	.250 (6.35mm)	.465 (11.8mm)
15	.425 (10.8mm)	.630 (16.0mm)
17	.964 (24.5mm)	1.150 (29.2mm)

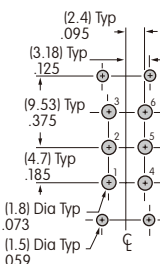
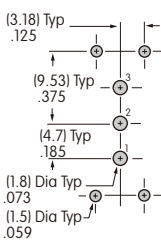
Straight PC • Reinforced Bracket



Double Pole



MB2411A2G23-FA



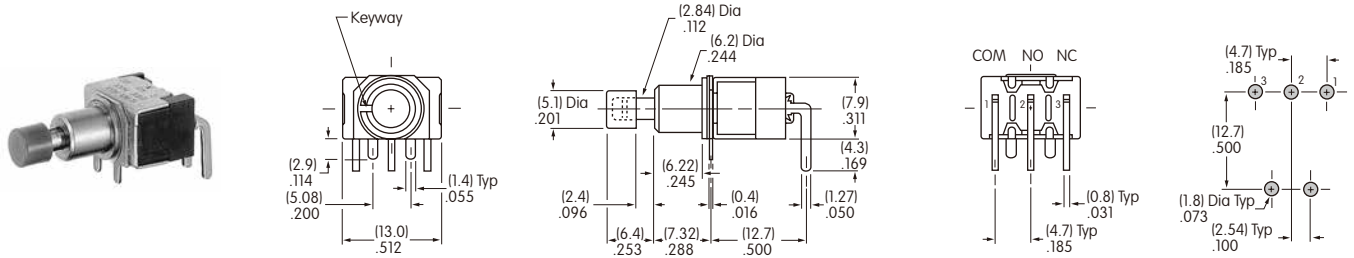
Terminal Code:	Terminal Length:	Bracket Length:
23	.250 (6.35mm)	.465 (11.8mm)
25	.425 (10.8mm)	.630 (16.0mm)
26	.750 (19.05mm)	.953 (24.2mm)

Toggles
 Rockers
 Pushbuttons
 Illuminated PB
 Programmable
 Keylocks
 Rotaries
 Slides
 Tactiles
 Tilt
 Touch
 Indicators
 Accessories
 Supplement

TYPICAL SWITCH DIMENSIONS

Right Angle PC

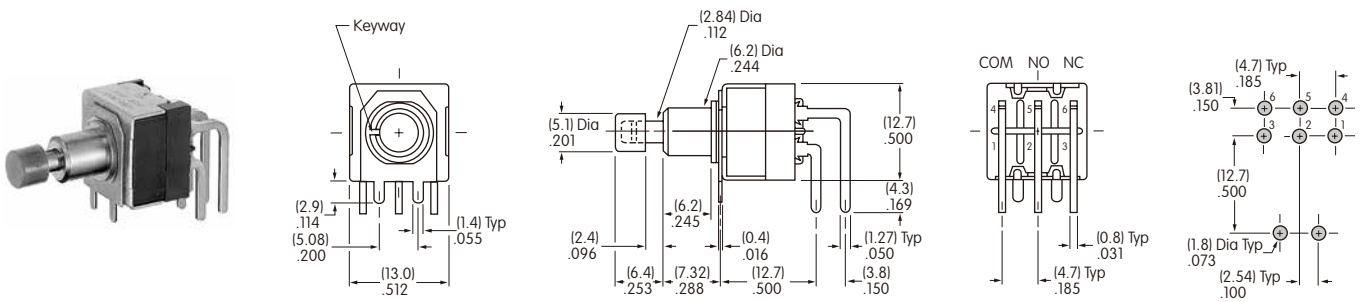
Single Pole



MB2411A2G30-FA

Right Angle PC

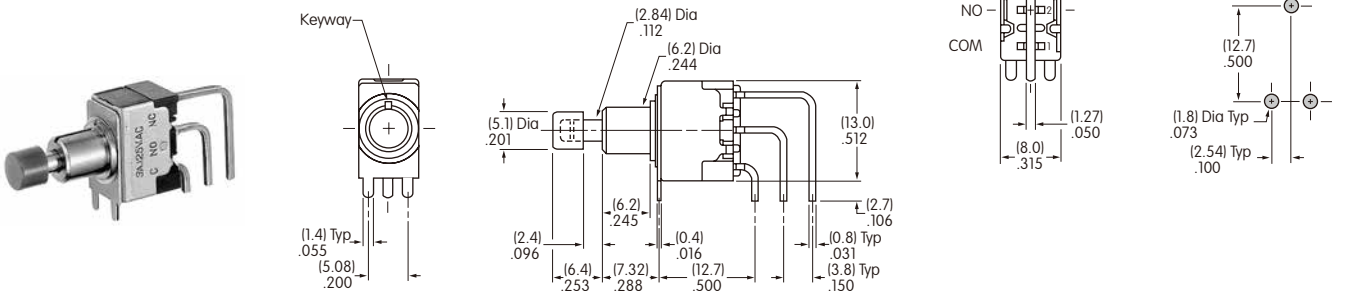
Double Pole



MB2461A2G30-FA

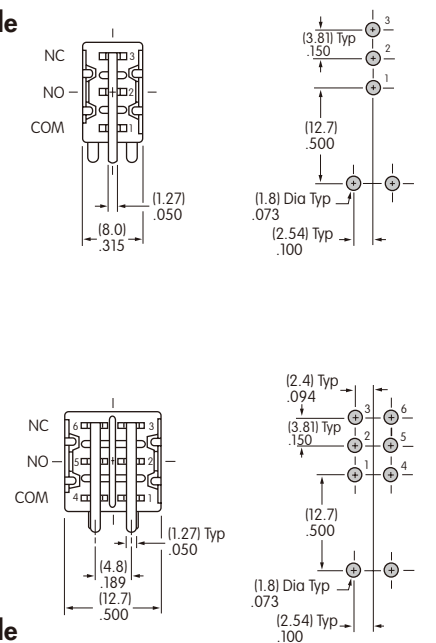
Vertical PC

Single Pole



MB2411A2G40-FA

Double Pole



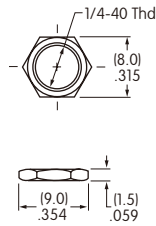
HARDWARE

Standard Hardware

AT513H Inch Threaded Hexagon Nut

2 included with each switch

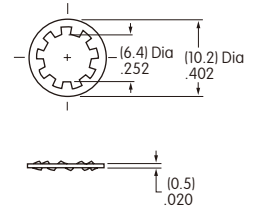
Material:
Brass with Nickel Plating



AT509 Lockwasher

1 included with each switch

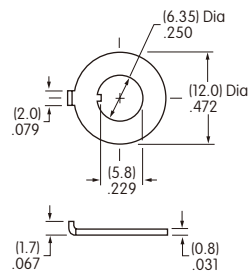
Material:
Steel with Zinc/Chromate



Optional Hardware

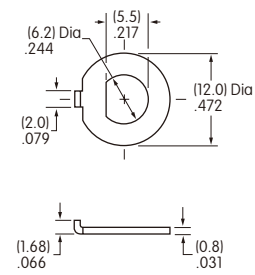
AT507H Locking Ring for A1 or S1 Bushing

Material:
Steel with Zinc/Chromate

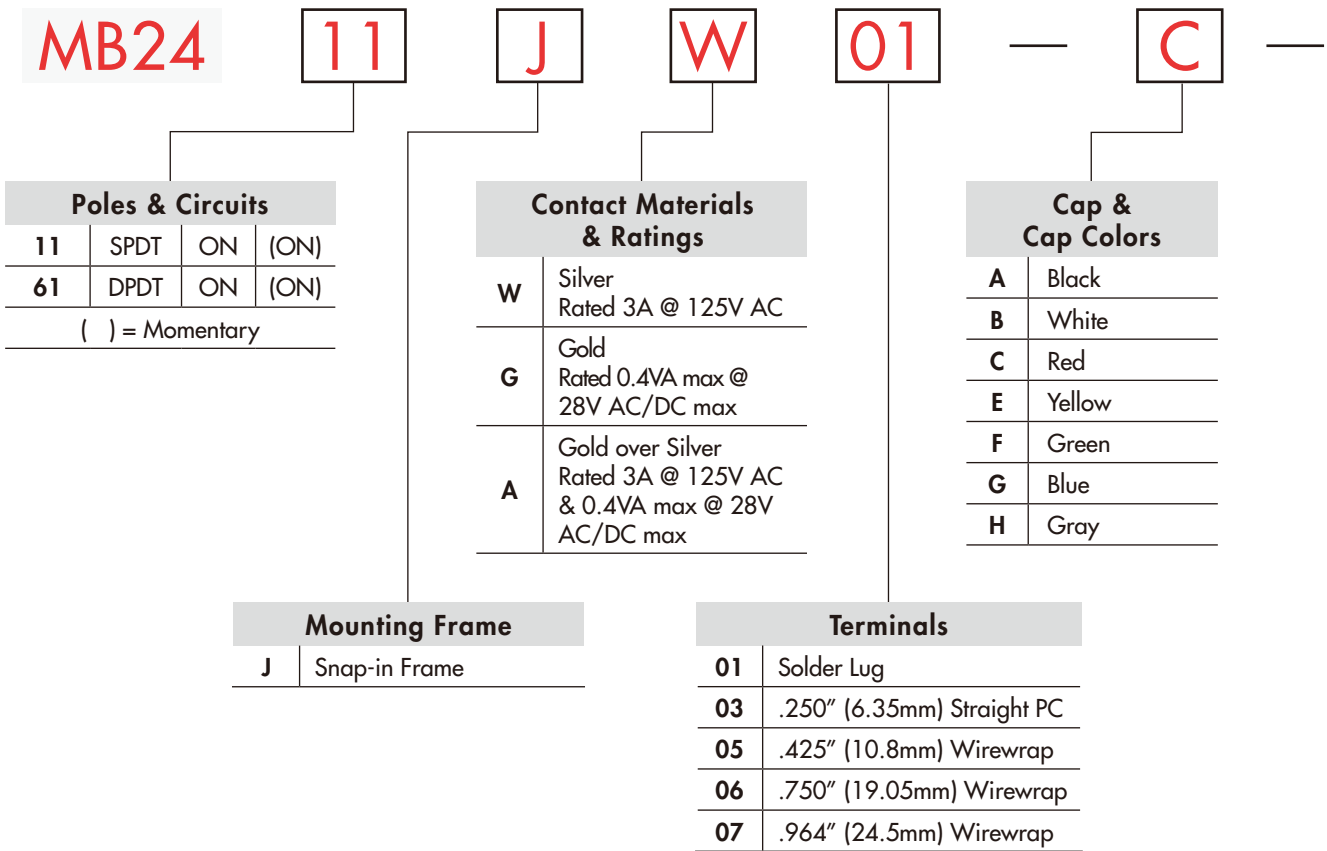


AT515 Locking Ring for E1 Bushing

Material:
Steel with Zinc/Chromate



TYPICAL SWITCH



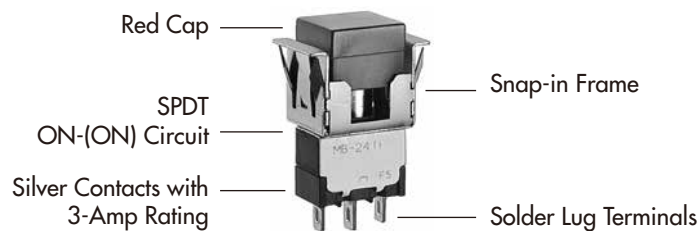
IMPORTANT:



Switches are supplied without UL, cULus & CSA marking unless specified.
UL, cULus & CSA recognized only when ordered with marking on the switch.
 Specific models, ratings, & ordering instructions are noted on the General Specifications page.

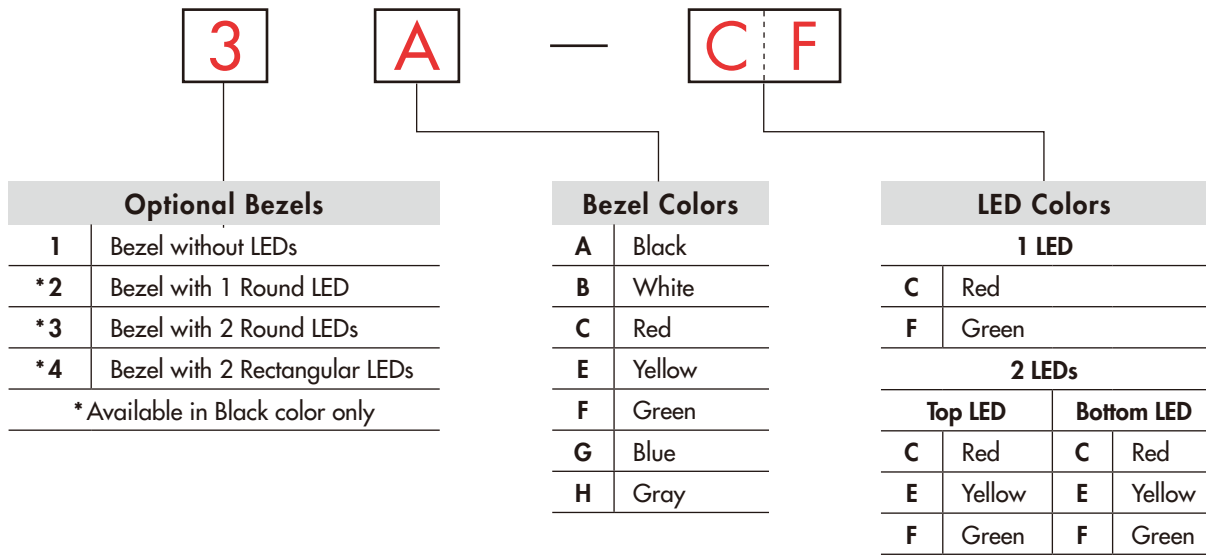
DESCRIPTION FOR TYPICAL ORDERING EXAMPLE

MB2411JW01-C



Toggles
Rocker
Pushbuttons
Illuminated PB
Programmable
Keylocks
Rotaries
Slides
Tactiles
Tilt
Touch
Indicators
Accessories
Supplement

ORDERING EXAMPLE




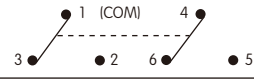
DESCRIPTION FOR TYPICAL ORDERING EXAMPLE

MB2411JW01-C-3A-CF



Toggles
 Rockers
 Pushbuttons
 Illuminated PB
 Programmable
 Keylocks
 Rotaries
 Slides
 Tactiles
 Tilt
 Touch
 Indicators
 Accessories
 Supplement

POLES & CIRCUITS

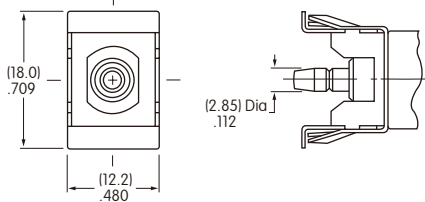
Pole	Model	Plunger Position () = Momentary		Connected Terminals		Throw & Switch Schematics
		Normal	Down	Normal	Down	
SP	MB2411	ON	(ON)	1-3	1-2	SPDT 
DP	MB2461	ON	(ON)	1-3 4-6	1-2 4-5	DPDT 

Note: Terminal numbers are not actually on the switch.

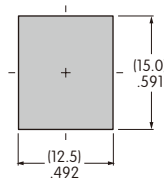
MOUNTING FRAME

J

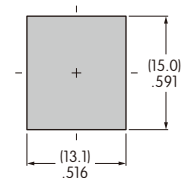
Snap-in Frame



Panel Cutout for Single Pole without Bezel



Panel Cutout for Double Pole without Bezel



Panel Thickness without Bezel: .039" ~ .157" (1.0mm ~ 4.0mm)
 Panel Thickness with Bezel: .039" ~ .126" (1.0mm ~ 3.2mm)

CONTACT MATERIALS & RATINGS

W

Silver over Silver

Power Level

3A @ 125V AC

G

Gold over Brass or Copper

Logic Level

0.4VA maximum @ 28V AC/DC maximum

Note: Complete explanation of operating range in Supplement section.

A

Gold over Silver

Power Level
or Logic Level

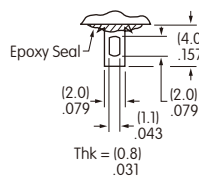
3A @ 125V AC
or 0.4VA maximum @ 28V AC/DC maximum

Note: This dual rated option is suitable when two or more identical switches are used in logic and in power circuits within the same application. See Supplement section for complete explanation of dual rating and operating range.

TERMINALS

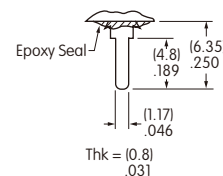
01

Solder Lug



03

.250" (6.35mm)
Straight PC



Wirewrap or Extended PC

05

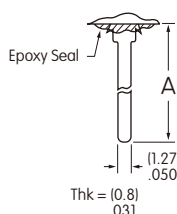
.425"
(10.8mm)

06

.750"
(19.05mm)

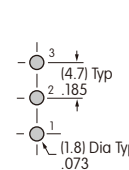
07

.964"
(24.5mm)

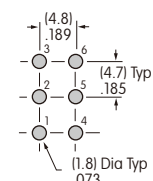


Refer to footprints if using as extended PC terminal.

Dimension A = terminal lengths as shown beside the code boxes at left.



Single Pole

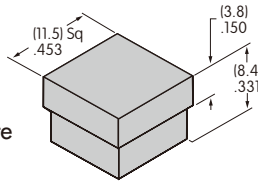


Double Pole

CAP & CAP COLORS

AT465 .453" (11.5mm) Square Cap

Material: Polycarbonate
Finish: Glossy



Contact factory for matte finish.

Legend details at end of this section.

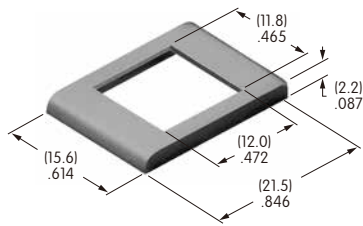
A	Black	B	White	C	Red	E	Yellow
F	Green	G	Blue	H	Gray		

OPTIONAL SNAP-IN BEZELS & BEZEL COLORS

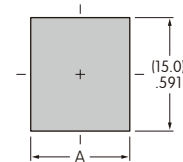
1 AT207 Bezel

Material: Polycarbonate
Finish: Glossy

Contact factory for matte finish.



A	Black	F	Green
B	White	G	Blue
C	Red	H	Gray
E	Yellow		

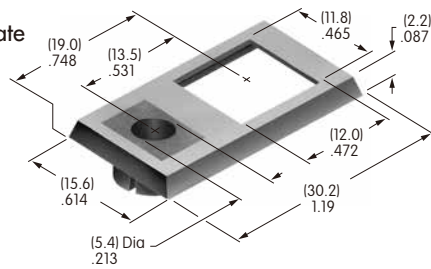


	Single Pole	Double Pole
A	(12.5)mm .492"	(13.1)mm .516"

2 AT208 Bezel for AT070 LED

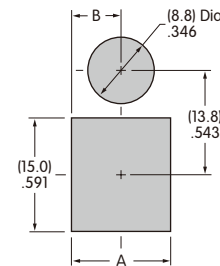
Material: Polycarbonate
Finish: Glossy

Contact factory for matte finish.



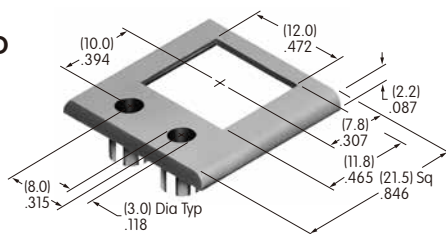
A Black
LED colors & specifications on next page.

	Single Pole	Double Pole
A	(12.5)mm .492"	(13.1)mm .516"
B	(6.25)mm .246"	(6.55)mm .258"



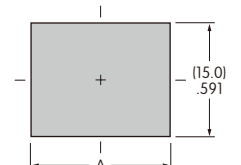
3 AT212 Bezel for AT617 LED

Material: Polycarbonate
Finish: Semi-glossy



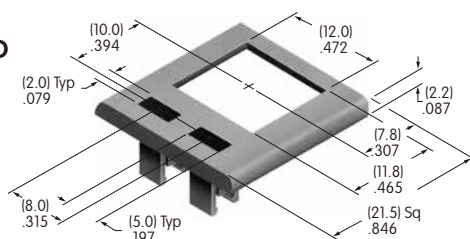
A Black
LED colors & specifications on next page.

	Single Pole	Double Pole
A	(18.4)mm .724"	(18.7)mm .736"



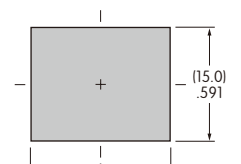
4 AT213 Bezel for AT618 LED

Material: Polycarbonate
Finish: Semi-glossy



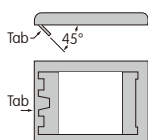
A Black
LED colors & specifications on next page.

	Single Pole	Double Pole
A	(18.4)mm .724"	(18.7)mm .736"

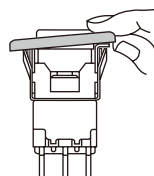


Bezel Assembly

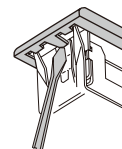
1. Pry out tab on bezel to a 45° angle.



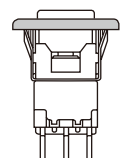
2. Insert switch frame under tab and snap on the bezel.



3. Push tab back into place.



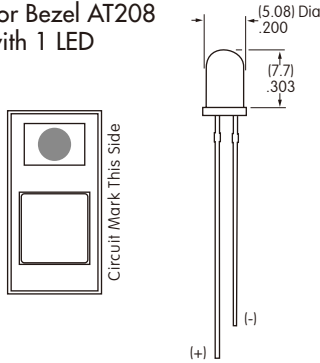
4. Snap assembled bezel and switch into panel.



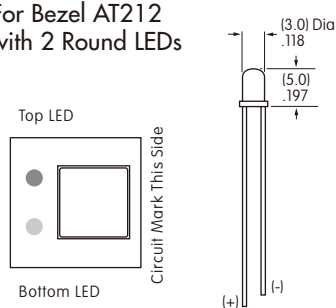
LED COLORS & SPECIFICATIONS

Bezel Orientation on Switch

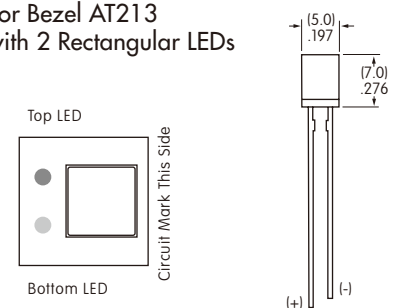
AT070 LED
For Bezel AT208
with 1 LED



AT617 LED
For Bezel AT212
with 2 Round LEDs



AT618 LED
For Bezel AT213
with 2 Rectangular LEDs



Note: Lead lengths may differ from manufacturing lot to lot. The longer lead is the anode (+).

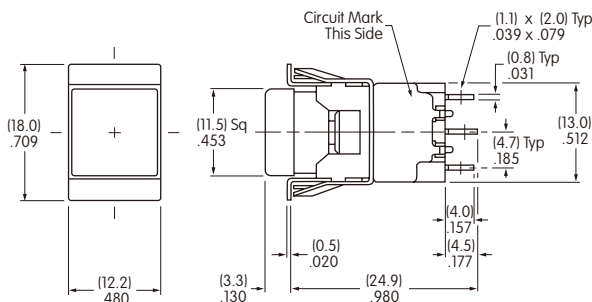
		AT070		AT617			AT618		
		C	F	C	E	F	C	E	F
	Color	Red	Green	Red	Yellow	Green	Red	Yellow	Green
	Maximum Forward Current	I_{FM} 25mA	50mA	30mA	30mA	25mA	25mA	30mA	25mA
	Typical Forward Current	I_F 20mA	30mA	20mA	20mA	20mA	20mA	20mA	20mA
	Forward Voltage	V_F 2.8V	2.1V	2.0V	2.1V	2.25V	2.25V	2.1V	2.2V
	Maximum Reverse Voltage	V_{RM} 4V	5V	5V	5V	5V	5V	5V	5V
	Current Reduction Rate Above 25°C	ΔI_F 0.33 mA/°C	0.40 mA/°C	0.40 mA/°C	0.40 mA/°C	0.33 mA/°C	0.33 mA/°C	0.40 mA/°C	0.33 mA/°C
	Ambient Temperature Range (when used with a bezel)	-10° ~ +70°C		-15° ~ +70°C			-25° ~ +70°C		

The electrical specifications shown are determined at a basic temperature of 25°C. LED circuit is independent of switch operation. LED is colored in OFF state.

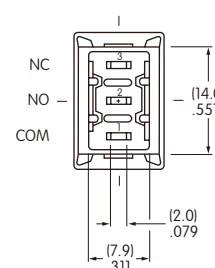
If the source voltage is greater than the rated voltage of the LED, a ballast resistor must be connected in series with the LED. The ballast resistor calculation and more lamp detail are shown in the Supplement section.

TYPICAL SWITCH DIMENSIONS

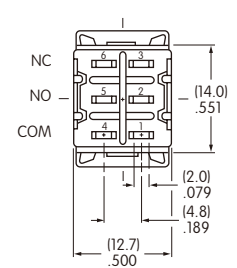
Solder Lug



Single Pole



Double Pole

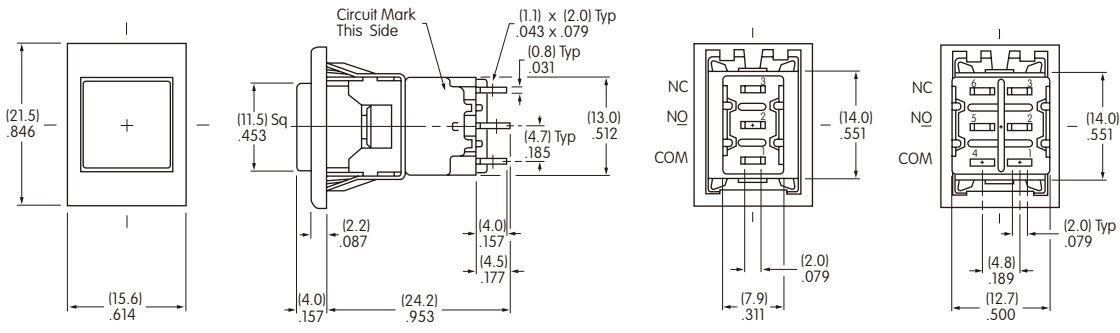


MB2411JW01-C

TYPICAL SWITCH DIMENSIONS

Single & Double Pole

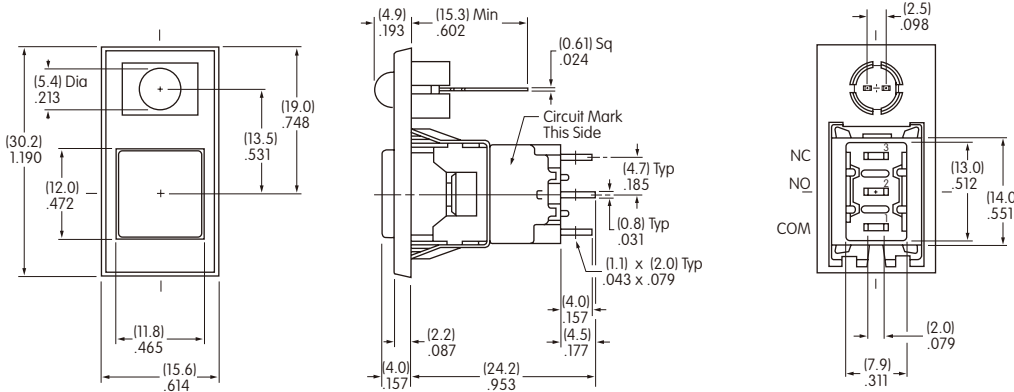
Solder Lug • AT207 Bezel



MB2411JW01-C-1A

Single Pole

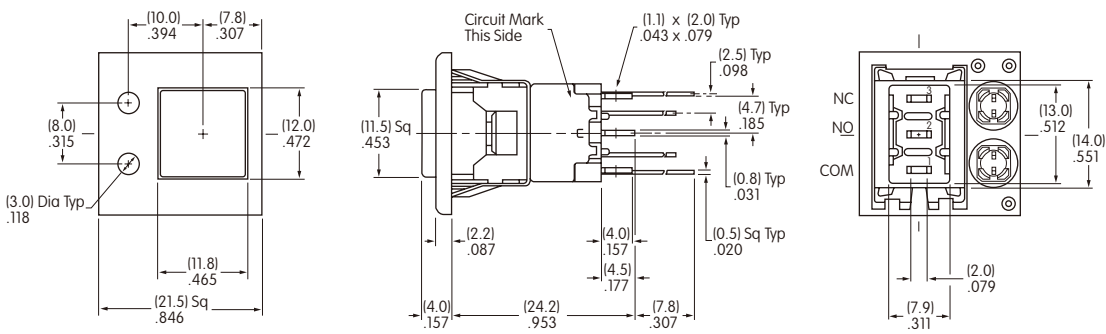
Solder Lug • AT208 Bezel



MB2411JW01-C-2A-C

Single Pole

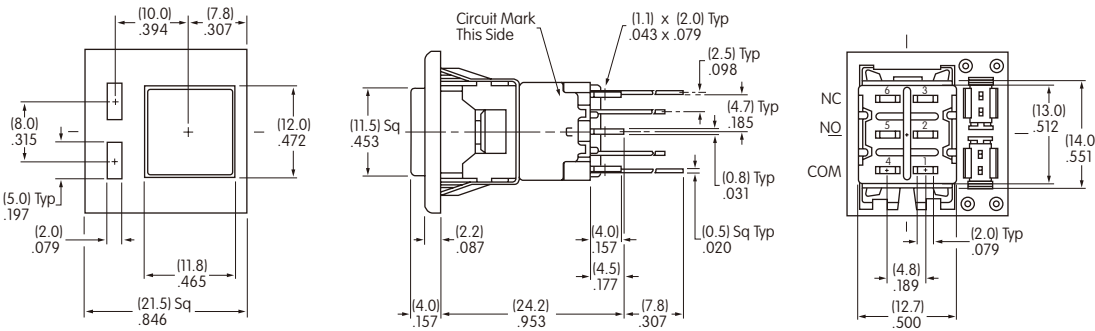
Solder Lug • AT212 Bezel



MB2411JW01-C-3A-CF

Double Pole

Solder Lug • AT213 Bezel



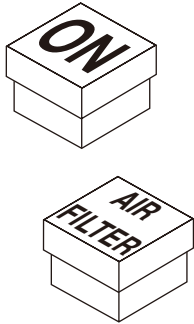
MB2461JW01-C-4A-CF

Toggles
 Rockers
 Pushbuttons
 Illuminated PB
 Programmable
 Keylocks
 Rotaries
 Slides
 Tactiles
 Tilt
 Touch
 Indicators
 Accessories
 Supplement

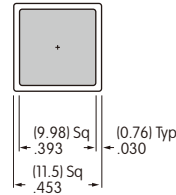
LEGENDS

NKK Switches can provide custom legends for caps. Contact factory for more information.

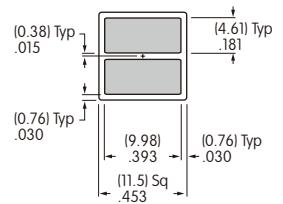
Suggested Printable Area for Cap



Recommended Print Method:
 Screen Print or Pad Print
 Epoxy based ink is recommended.



AT465



AT465

Shaded areas are printable areas.

