

## Contents for Standard Size Toggles



### Low Capacity ..... Page A101

5A Power Level  
Solder Lug Terminals  
Bushing Mount  
Double Pole



### Medium Capacity ..... Page A103

15~20A Power Level  
Solder Lug, Quick Connect Terminals  
Bushing Mount  
Single & Double Pole



### Medium/High Capacity .... Page A108

15~25A Power Level  
Solder Lug, Screw Lug, Quick Connect Terminals  
Bushing Mount  
One through Four Pole



### High Capacity ..... Page A119

30~50A Power Level  
Screw Lug Terminals  
Bushing Mount or Mounting Screws  
Double Pole & Three Pole

GENERAL SPECIFICATIONS FOR S100s

A  
Toggles

**Electrical Capacity (Resistive & Inductive Load)**

**Power Level:** Shown in the following table

**Other Ratings**

**Contact Resistance:** 10 milliohms maximum  
**Insulation Resistance:** 200 megohms minimum @ 500V DC  
**Dielectric Strength:** 1,500V AC minimum for 1 minute minimum  
**Mechanical Life:** 30,000 operations minimum  
**Electrical Life:** 10,000 operations minimum  
**Operating Temp Range:** -10°C through +70°C (+14°F through +158°F)

**Materials & Finishes**

**Toggle:** Brass with chrome plating  
**Bushing:** Brass with chrome or nickel plating  
**Case:** Phenolic resin  
**Case Cover:** Steel with zinc plating  
**Movable Contactor Plate:** Copper with silver plating  
**Movable & Stationary Contacts:** Silver alloy plus copper with silver plating  
**Terminals:** Copper with silver plating

**Environmental Data**

**Operating Temp Range:** -10°C through +70°C (+14°F through +158°F)

**Installation**

**Mounting Torque:** 2.94Nm (26 lb•in) for double nut  
**Soldering Time & Temperature:** Manual Soldering: See Profile A in Supplement section.

**Standards & Certifications**

**CSA:** File No. 023535\_0\_000 - Certified only when ordered with marking on switch.  
 Add "/C" to end of part number to order CSA certified switch.  
 Certified at 5A @ 125V AC & 2A @ 250V AC.

Rockers

Pushbuttons

Illuminated PB

Programmable

Keylocks

Rotaries

Slides

Tactiles

Tilt

Touch






Indicators

Accessories

Supplement

Toggles  
 Rockers  
 Pushbuttons  
 Illuminated PB  
 Programmable  
 Keylocks  
 Rotaries  
 Slides  
 Tactiles  
 Tilt  
 Touch  
 Indicators  
 Accessories  
 Supplement

### DOUBLE POLE WITH SOLDER LUG

* CSA certified only when ordered with marking on switch (see General Specs)		Toggle Position/Connected Terminals					Electrical Capacity				Angle of Throw
Model	* Approvals	Pole & Throw	Down	Center	Up	Resistive			Inductive		
	 					AC 125V	AC 250V	DC 30V	AC 125V PF 0.6		
S114	— ✓	DPST	ON 2-1 5-4	NONE	OFF —	5A	2A	5A	3A	25°	
S116	— ✓	DPDT	ON 2-1 5-4	NONE	ON 2-3 5-6	5A	2A	5A	3A	25°	
S116R	— —	DPDT	ON 2-1 5-4	NONE	ON 2-3 5-6	5A	2A	5A	3A	25°	

Throw & Schematics:

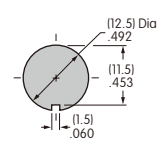
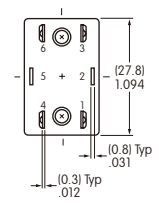
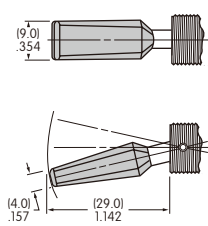
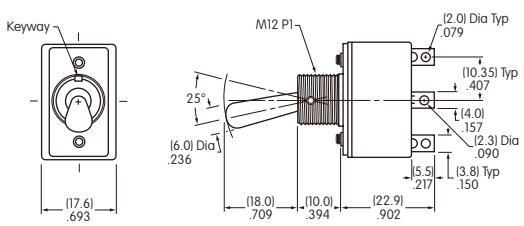


Note: Terminal numbers are actually on the switch

**Notes:** Standard Hardware: AT504M Knurled Nut, AT508 Lockwasher, AT527M Backup Hex Nut. See Accessories & Hardware section.  
 Optional Splashproof Boot Assemblies (only for bat lever models): AT401 & AT4181 boots plus hex nut and o-ring. See Accessories & Hardware section.

#### S114 & S116

#### S116R Black Polyamide Paddle



**S116**

S114 does not have terminals 3 & 6

Maximum Panel Thickness: .158" (4.0mm)